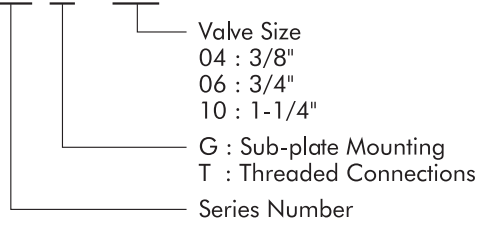




# Throttle Valves

## HOW TO ORDER

### SR G - 03



## SPECIFICATIONS

Model No.		Max. pressure kgf/cm <sup>2</sup>	Rated flow LPM	Weight kgs	
Threaded connections	Sub-plate mounting				
SRT-03	SRG-03	210	30	1.1	1.2
SRT-06	SRG-06		80	2.3	2.4
SRT-10	SRG-10		200	5.8	4.9

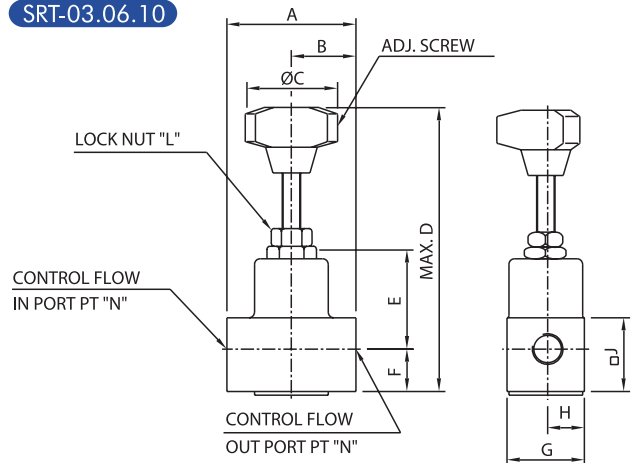
## ATTACHMENT

Model No.	Soc hol cap screw
SRG-03	M8 x 35L.....4pcs
SRG-06	M10 x 45L.....4pcs
SRG-10	M12 x 60L.....6pcs

## INSTALLATION DIMENSIONS:

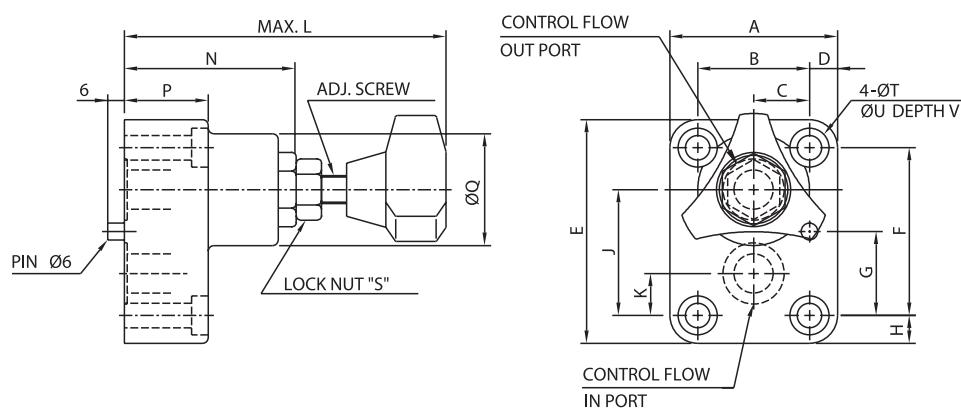
UNIT: mm

### SRT-03.06.10



Model No.	A	B	C	D	E	F	G	H	J	L	N
SRT-03	70	35	40	143	54	23	42	20	40	19	3/8"
SRT-06	100	50	40	136.5	62	30	62	30	60	19	3/4"
SRT-10	130	65	56	173	73	40	82	40	80	22	1-1/4"

### SRG-03.06.10



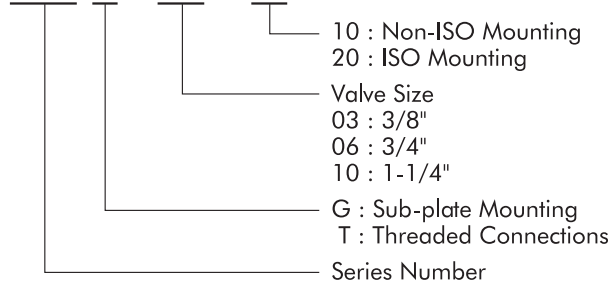
Model No.	A	B	C	D	E	F	G	H	J	K	L	N	P	Q	S	T	U	V
SRG-03	60	40	20	10	80	60	30	10	45	15	100	65	30	44	19	9	14	8.6
SRG-06	80	58	29	11	92	70	35	11	54	16	117.5	73	42	41.5	23	11	17.5	10.8
SRG-10	100	72	36	14	120	92	46	14	71	21	145	100	55	56	23	13.5	21	1.0



# Throttle And Check Valves

## HOW TO ORDER

### SRC G - 03 - 10



## SPECIFICATIONS

Model No.		Max. pressure kgf/cm <sup>2</sup>	Rated flow LPM	Weight kgs	
Threaded connections	Sub-plate mounting				
SRCT-03	SRCG-03	210	30	1.2	2.1
SRCT-06	SRCG-06		80	3.2	4.0
SRCT-10	SRCG-10		200	7.1	8.1

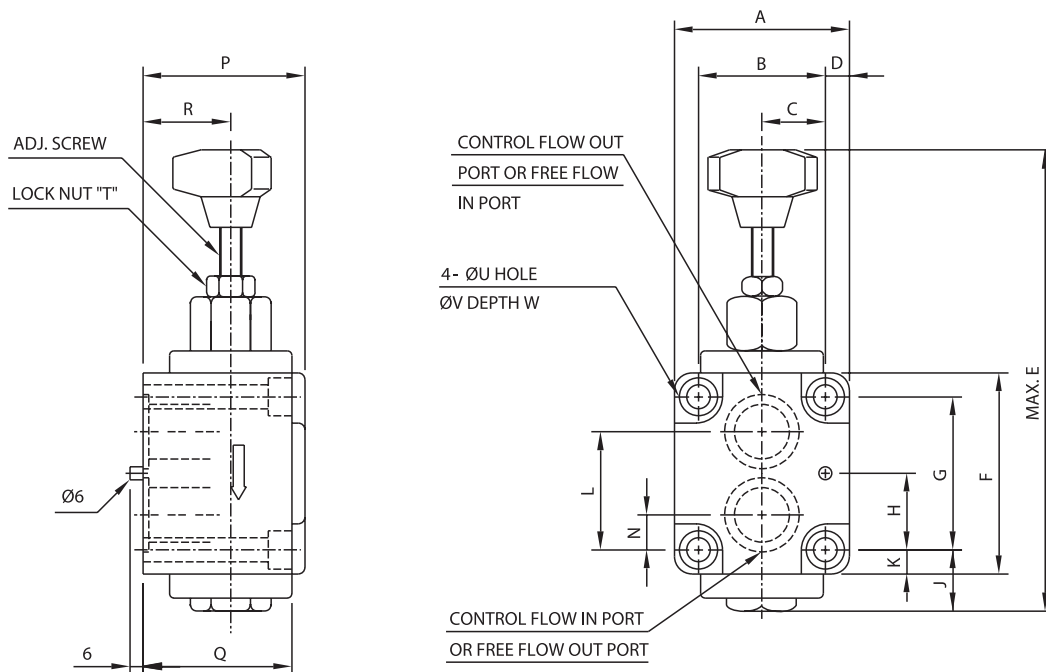
## ATTACHMENT

Model No.	Soc hol cap screw
SRCG-03-10	M8 x 60L.....4pcs
SRCG-06-10	M10 x 70L.....4pcs
SRCG-10-10	M12 x 100L....4pcs
SRCG-03-20	M10 x 45L.....4pcs
SRCG-06-20	M10 x 50L.....4pcs
SRCG-10-20	M12 x 55L.....6pcs

## INSTALLATION DIMENSIONS:

UNIT: mm

SRCG-03.06.10-10



Model No.	A	B	C	D	E	F	G	H	J	K	L	N	P	Q	R	T	U	V	W
SRCG-03	60	40	20	10	179	80	60	30	28	10	45	15	62	55	35	19	8.8	14	8.6
SRCG-06	80	58	29	11	213	95	70	35	30	11	54	16	74	68	40	19	11	17.5	10.8
SRCG-10	100	72	36	14	228	120	92	46	31	14	71	21	97	82	50	22	13.5	21	1

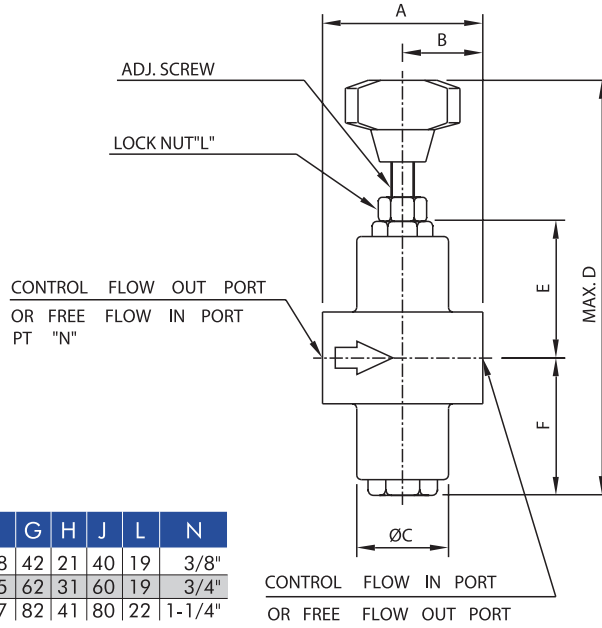


# Throttle And Check Valves

## ■ INSTALLATION DIMENSIONS:

UNIT: mm

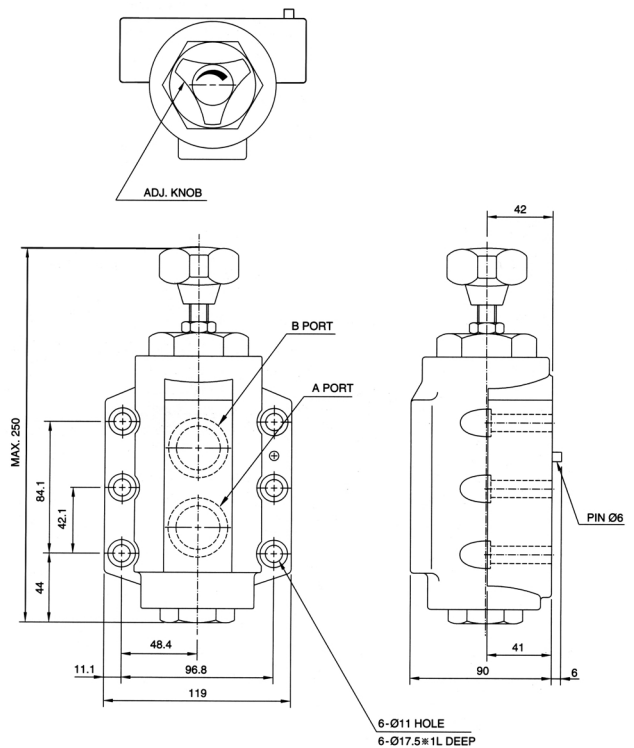
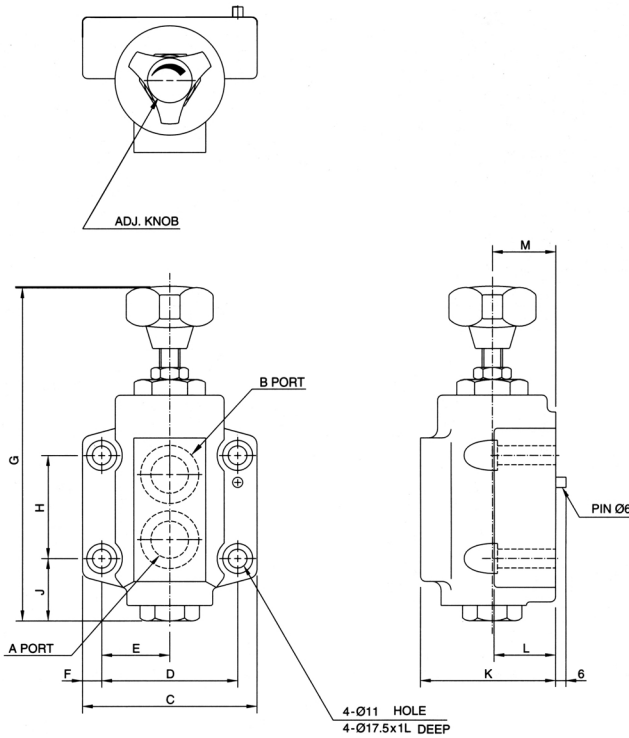
### SRCT-03.06.10-10



Model No.	A	B	C	D	E	F	G	H	J	L	N
SRCT-03	70	35	40	180	62.5	58	42	21	40	19	3/8"
SRCT-06	100	50	60	215	83	65	62	31	60	19	3/4"
SRCT-10	130	65	80	228	106	77	82	41	80	22	1-1/4"

### SRCG / SRG-03.06-20

### SRCG / SRG-10-20



SRCG / SRG-03: ISO 5781-AG-06-2-A  
 SRCG / SRG-06: ISO 5781-AH-08-2-A

SRCG / SRG-10: ISO 5781-AJ-10-2-A

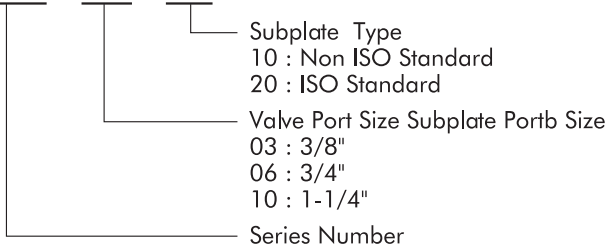
Model No.	C	D	E	F	G	H	J	K	L	M
SRCG-03 SRG-03	90	66.7	33.3	11.7	173	42.9	32	64	31	31
SRCG-06 SRG-06	102	79.4	39.7	11.3	203	60.3	36.5	79	36	37



# Subplate of Non ISO Standard SRG/SRCG

## HOW TO ORDER

### SRM - 03 - 10



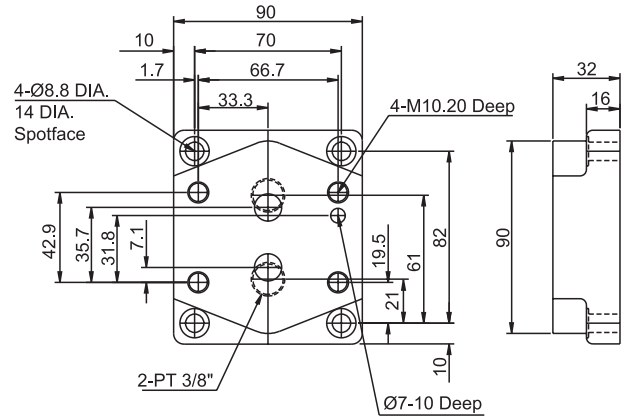
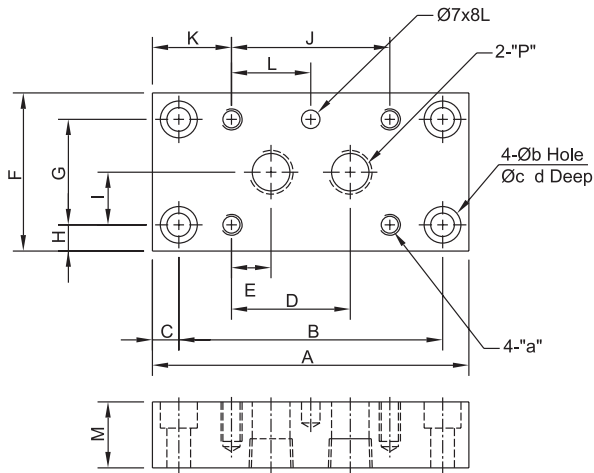
## INSTALLATION DIMENSIONS:

UNIT: mm

SRM-03.06.10

SRM-03-20

ISO Mounting



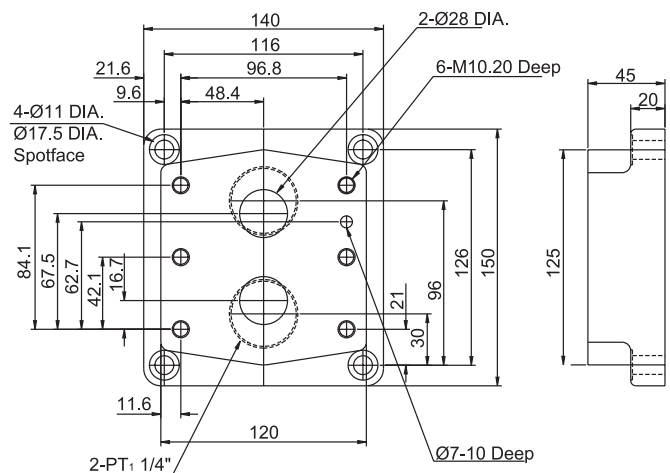
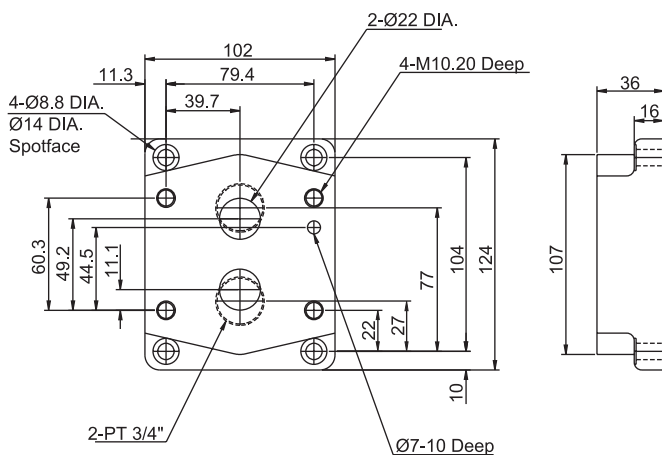
Model No.	A	B	C	D	E	F	G	H	I	J	K	L	M	P	b	c	d
SRM-03-10	120	100	10	45	15	60	40	10	20	60	30	30	25	3/8"	9	14	10
SRM-06-10	134	110	12	54	16	82	58	12	29	70	32	35	32	3/4"	11	18	12
SRM-10-10	160	132	14	71	21	100	72	14	36	92	34	46	50	1-1/4"	13	20	14

SRM-06-20

ISO Mounting

SRM-10-20

ISO Mounting

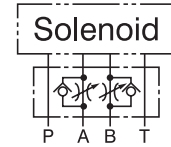
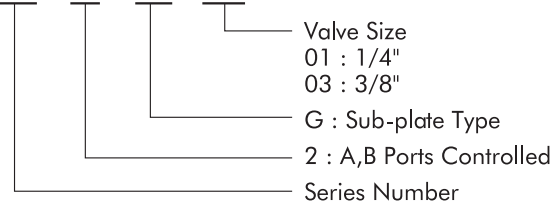




# Throttle And Check Module Valves

## HOW TO ORDER

**TC - 2 - G - 01**



## SPECIFICATIONS

Model No.	Max. operated pressure kgf/cm <sup>2</sup>	Max. flow l/min	Weight kgs
TC2G-01	210	30	0.65
TC2G-03		80	1.8

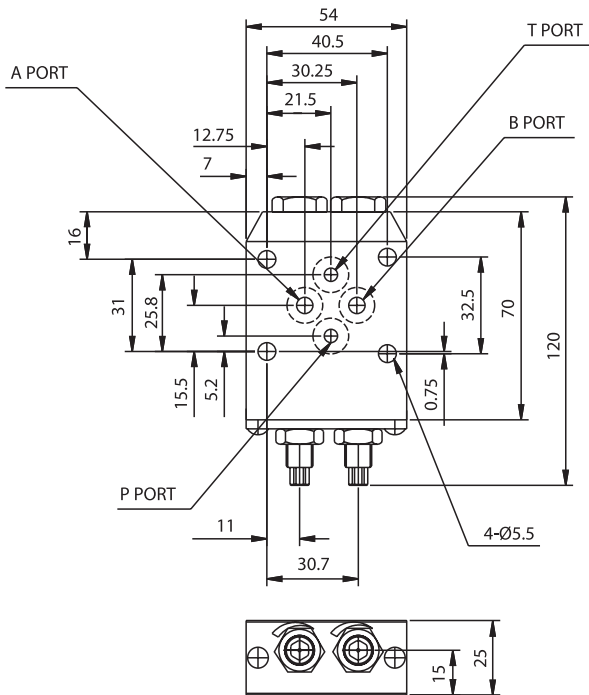
## ATTACHMENT

Model No.	Soc hol cap screw
TC2G-01	M5 x 70L.....4pcs
TC2G-03	M6 x 70L.....4pcs

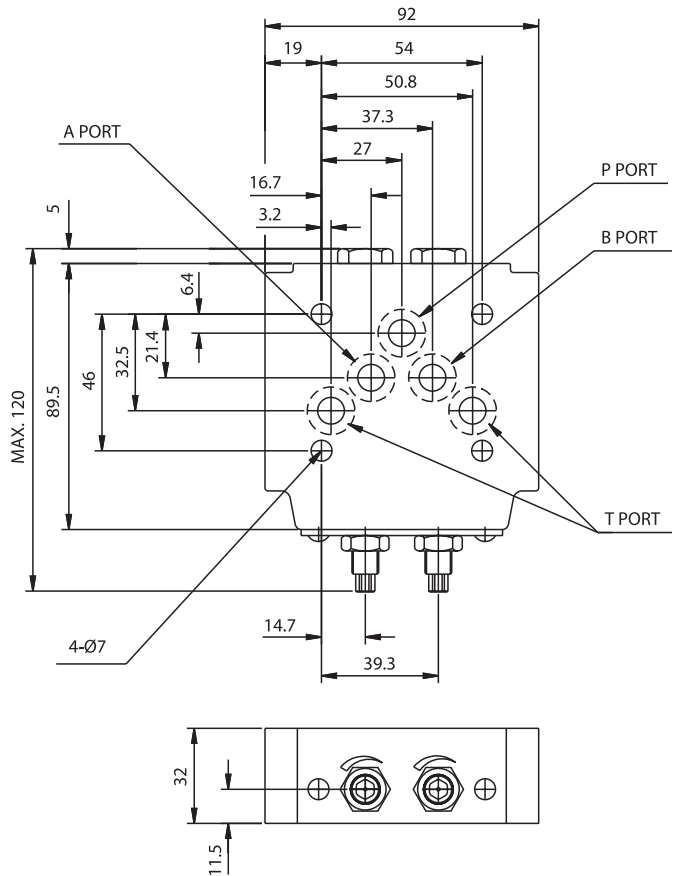
## INSTALLATION DIMENSIONS:

UNIT: mm

TC2G-01



TC2G-03

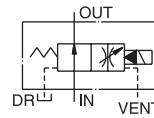
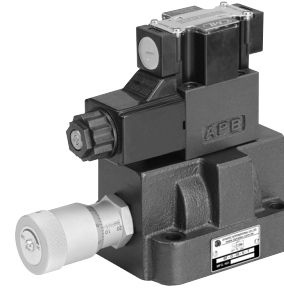
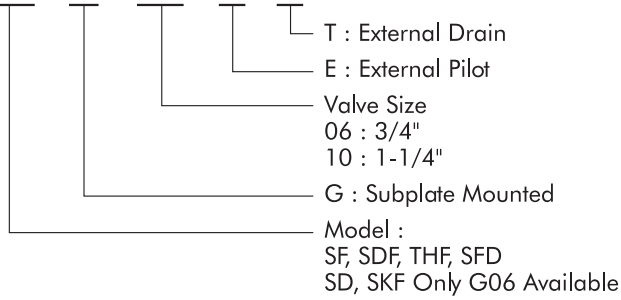




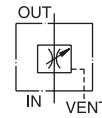
# Solenoid Operated Flow Controlled Valves

## HOW TO ORDER

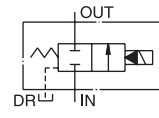
**SF - G - 06 - E - T**



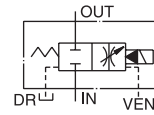
SF-G06/G10



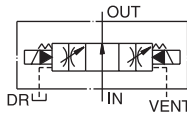
THF-G06/G10



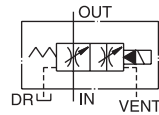
SD-G06/G10



SDF-G06/G10



SKF-G06



SFD-G06/G10

## SPECIFICATIONS

Model No.	Max. operated pressure kgf/cm <sup>2</sup>	Max. flow LPM	Pilot valve	Weight kgs	
SF-G06	210	120	WH-G02-2B2S	6.4	
SDF-G06			WH-G02-2B2	6.4	
THF-G06			—	5.0	
SD-G06			WH-G02-2B2	6.1	
SFD-G06			WH-G02-2B2S	6.7	
SKF-G06			WH-G02-3C4	7.5	
SF-G10		240	240	WH-G02-2B2S	9.9
SDF-G10				WH-G02-2B2	9.9
THF-G10				—	8.4
SD-G10				WH-G02-2B2	9.4
SFD-G10			WH-G02-2B2S	10.4	

## ATTACHMENT

Model No.	Soc hol cap screw
SF-06	M10 x 45L.....4pcs
SF-10	M10 x 45L.....4pcs

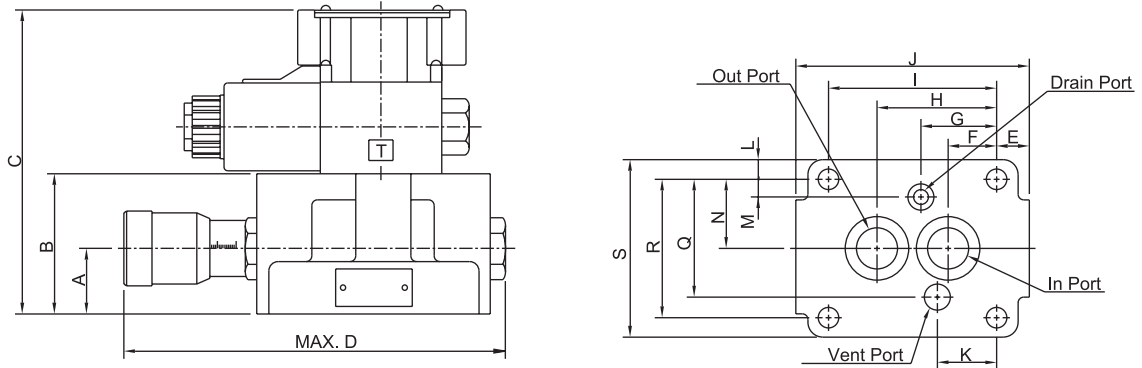


# Solenoid Operated Flow Controlled Valves

## ■ INSTALLATION DIMENSIONS:

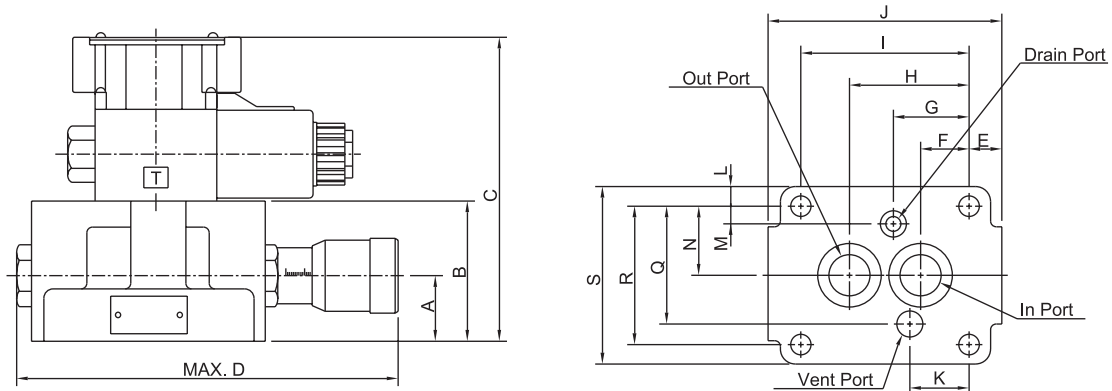
UNIT: mm

### SF-G06/G10



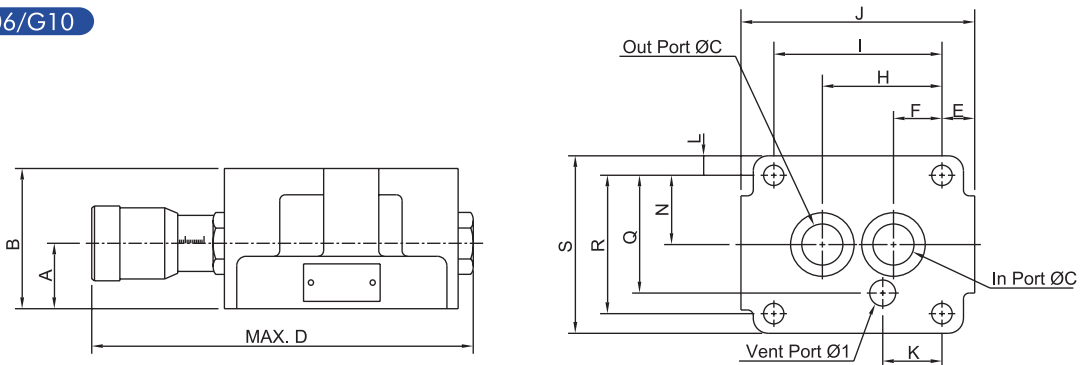
Model No.	A	B	C	D	E	F	G	H	I	J	K	L	M	N	Q	R	S
SF-G06	35	75	162.5	209	17.5	26	40.5	64	90	125	31.7	10.5	9.5	37	63	74	95
SF-G10	40	86	173.5	248	19	34	47	78	112	150	37.9	14.5	16	43	76	86	115

### SDF-G06/G10



Model No.	A	B	C	D	E	F	G	H	I	J	K	L	M	N	Q	R	S
SDF-G06	35	75	162.5	209	17.5	26	40.5	64	90	125	31.7	10.5	9.5	37	63	74	95
SDF-G10	40	86	173.5	248	19	34	47	78	112	150	37.9	14.5	16	43	76	86	115

### THF-G06/G10



Model No.	A	B	C	D	E	F	H	I	J	K	L	N	Q	R	S
THF-G06	35	75	Ø26	209	17.5	26	64	90	125	31.7	10.5	37	63	74	95
THF-G10	40	86	Ø29	248	19	34	78	112	150	37.9	14.5	43	76	86	115

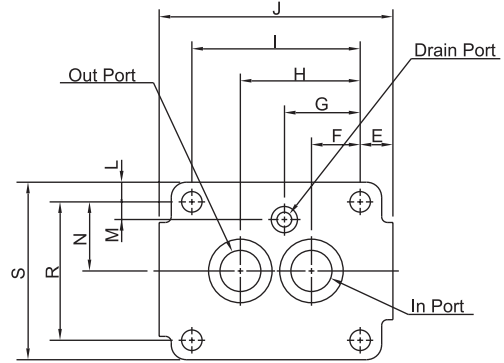
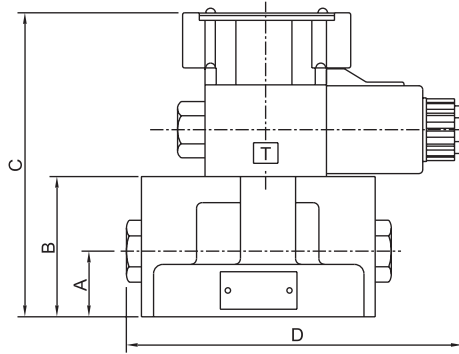


# Solenoid Operated Flow Controlled Valves

## ■ INSTALLATION DIMENSIONS:

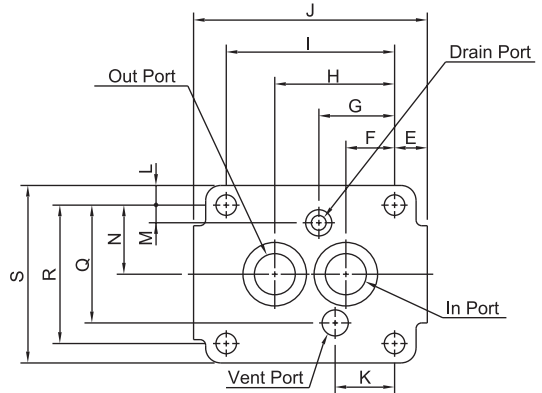
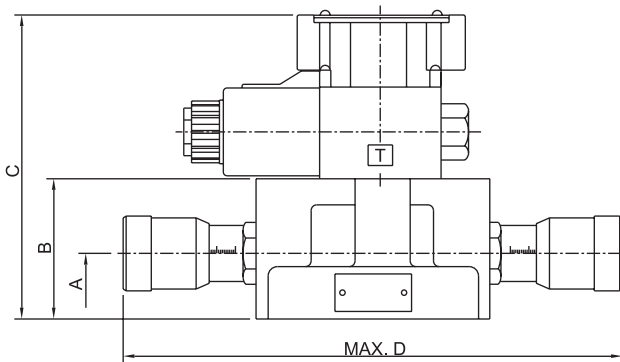
UNIT: mm

### SD-G06/G10



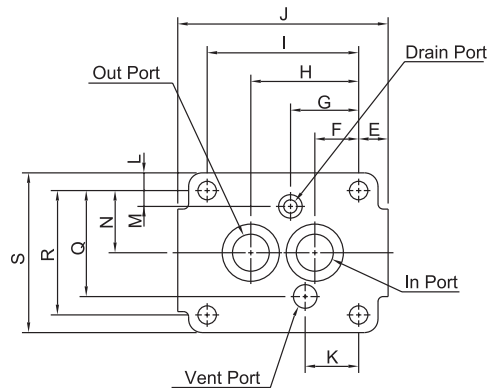
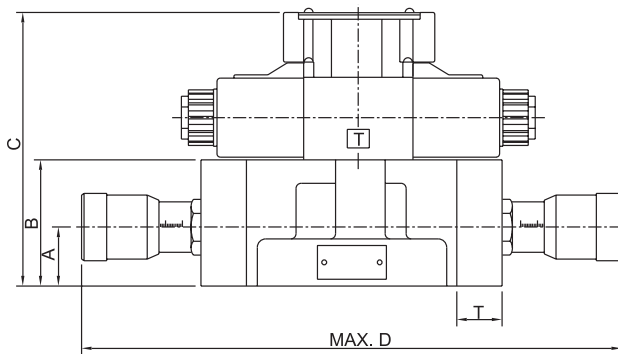
Model No.	A	B	C	D	E	F	G	H	I	J	L	M	N	R	S
SD-G06	35	75	162.5	180	17.5	26	40.5	64	90	125	10.5	9.5	37	74	95
SD-G10	40	86	173.5	197	19	34	47	78	112	150	14.5	16	43	86	115

### SFD-G06/G10



Model No.	A	B	C	D	E	F	G	H	I	J	K	L	M	N	Q	R	S
SFD-G06	35	75	162	277	17.5	26	40.5	64	90	125	31.7	10.5	9.5	37	63	74	95
SFD-G10	40	86	173.5	328	19	34	47	78	112	150	37.9	14.5	16	43	76	86	115

### SKF-G06



Model No.	A	B	C	D	E	F	G	H	I	J	K	L	M	N	Q	R	S	T
SKF-G06	35	75	162.5	315	17.5	26	40.5	64	90	125	31.7	10.5	9.5	37	63	74	95	27